

MTY-PIA-B318

# Huinala I

## Industrial Development Huinala

Carretera Huinala km. 2.8 #404, Industrial Development Huinala.  
Apodaca, Nuevo Leon, Mexico.



**American Industries**

Real Estate + Shelter

Mexico's Leading Manufacturing Facilitator

**Building: 148,956 Sq. Ft.**

**Land: 318,299 Sq. Ft.**

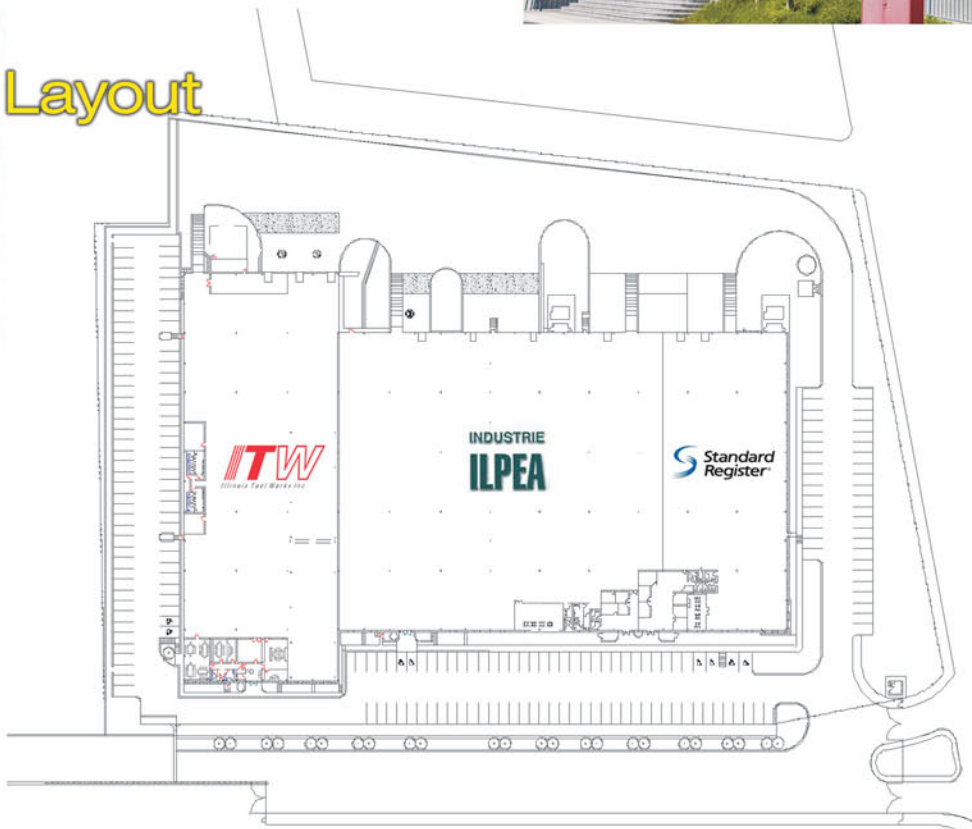
**Building: 13,838 m<sup>2</sup> / Land: 29,570 m<sup>2</sup>**

### Competitive Advantage

- Privileged location on the NAFTA corridor and time zone.
- Human Capital: World-class education and stable labor force.
- Modern Infrastructure.
- Close link between academia and industry.



## Facility Layout



Mx + 52 81 8901-4159 - [monterrey@aig.com](mailto:monterrey@aig.com) - Toll Free 1-877-698-3905

[www.aig.com](http://www.aig.com)



MTY-PIA-B318

# Huinala I

## Industrial Development Huinala

Carretera Huinala km. 2.8 #404, Industrial Development Huinala.  
Apodaca, Nuevo Leon, Mexico.



**American Industries**

Real Estate + Shelter

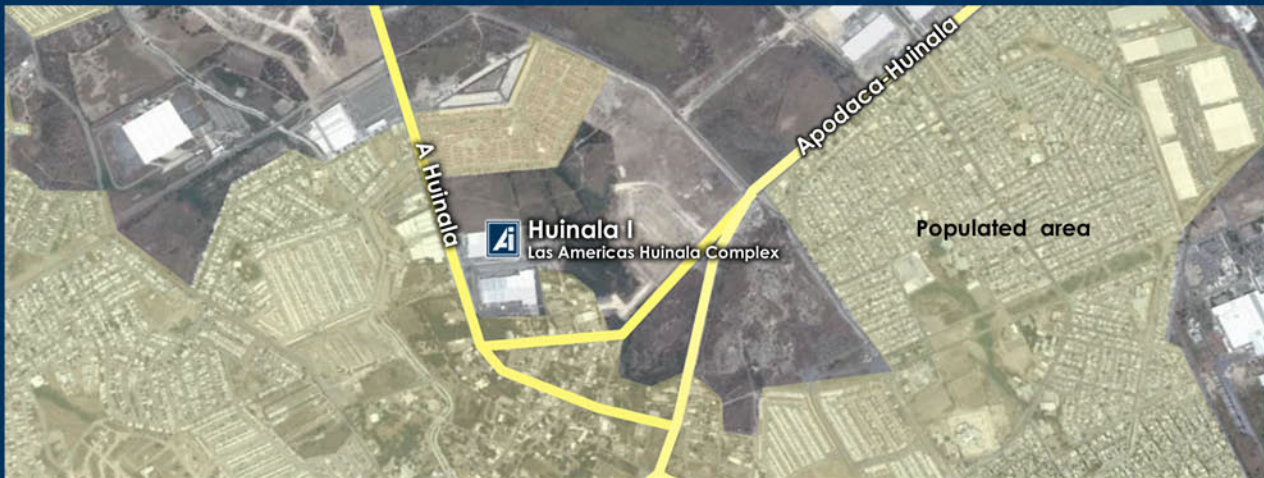
Mexico's Leading Manufacturing Facilitator

**Building: 148,956 Sq. Ft.**

**Land: 318,299 Sq. Ft.**

**Building: 13,838 m<sup>2</sup> / Land: 29,570 m<sup>2</sup>**

### Location



- Ratio:** 1:2.1
- Clear Height:** 25' - 29' & 24' - 29'
- Dock:** 9 dock high, 8' x 10' manually operated roll up door. 4 concrete ramp with 10' x 12' manually operated roll up door.
- Bay Spacing:** 44' X 50'
- Walls:** Precast walls
- Roof:** SSR-KR18 system - gauge 22, 15% roof skylight, 3.5" fiber glass insulation
- Floor:** 6" thick concrete floor
- Floor Seal:** Ashford floor seal
- Production Lighting Level:** Metal halide 40 fc average
- Offices Lighting Level:** Fluorescent 50 fc average
- Offices Area:** 6,328 Sq.Ft.
- Cafeteria:** 72
- Production Restroom:** Men 8 Urinals, 9 WC  
Women 11 WC
- HVAC:** Mechanical A/C package units on offices  
Exhaust fans for production in ILPEA  
package units at ITW and Standard
- Substation Capacity:** 2,300 KVA
- Fire Protection System:** Shared system with hoses & extinguishers
- Car Parking Lot:** 196 parking spaces
- Trailers Parking Lot:** 3 parking spaces (docks)
- KVA Rights:** 2,141 KVA
- Water and Sewerage:** Available
- Gas:** Natural Gas
- Telephone:** Digital services

